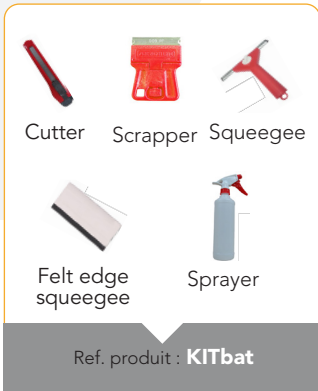


Essentials accessories



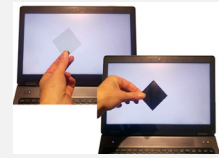
1 Precautions before installation



1. Lay the film out flat

One day before installation, lay the film flat. This step prevents the film's shape memory phenomenon, which can lead to delamination.

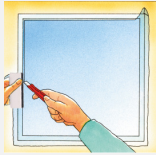
 Placez un échantillon du SPY-FILM indiquant son sens de découpe depuis l'extérieur de la pièce à équiper en vérifiant chaque écran.



2. Test the installation direction

Depending on the display technology (LED, LCD) and its orientation, it can be installed horizontally or vertically.

2 Installation



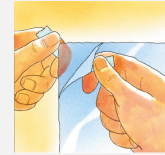
3. Cut-outs

Cut the film exactly to size before installation. This step prevents any risk of splitting the film.



4. Cleaning

Clean the glass perfectly. Spray with soapy water and use a scraper. Wipe glass and frame with a soft cloth.



5. Liner separation


Separate the protective film from the foil.

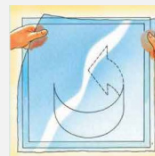
 Use 2 pieces of tape (not supplied) placed at an angle opposite each other to separate the 2 parts.



6. Neutralize the glue


While carefully removing the film, spray the adhesive side with plenty of soapy water.

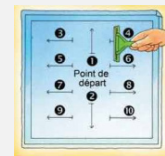
 Moisten your fingers to prevent dusting



7. Position the film

Moisten the glass to be fitted. Turn the film over, applying the wet side to the glass, taking it from the top.

 Once the film has been applied, spray with soapy water to make the maroufle glide.



8. Scrap the film

Smooth the film using the maroufle with handle from the center outwards, starting at the top.

 **The installation is complete !**

