

Essential accessories



Scotch Brite



St Marc oxydrine

Suggested accessories



Short-haired roller



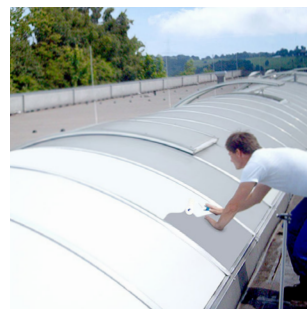
Paint sprayer

1 Preparing to apply solar lacquer

- Thoroughly clean and degrease the surfaces to be treated. No oily or greasy traces should remain. Remove any silicone and foam. The lacquer is applied to clean and dry surfaces.
- Clean with St-Marc «Oxydrine» or other washing powder. Rinse well with clear water and allow to dry. If necessary, wipe with a dry cloth to accelerate drying.
- When cleaning, use «Scotch Brite» industrial quality and scratch the plastic support to obtain a better adhesion of the lacquer:
 - For domes: scratch in the round. Apply from the bottom to the top. Repeat the operation on all 4 sides of the dome.
 - For corrugated and «cintronefs»: scratch from top to bottom. Apply from the bottom up and put a final veil on the corrugated parts (from top to bottom).
- The lacquer does not adhere to the silicone.

2 Roller application (recommended for small areas)

Application with a short nap roller: apply two thin, intersecting coats separated by one hour



3 Spray application (recommended for large areas)

- This application is done with a spray gun (electric or compressor).
- We recommend an application pressure of 2.8 to 3 bar.
- The nozzle should be approximately 0.8 mm (depending on the type of spray gun used and the operating pressure) and the jet vertical. Spray from a distance of about 30 cm from the substrate, with a spray cone of about 30 cm in diameter.
- Stir the paint inside the can before pouring it into the gun tank.
- The application is done in several crossed veils (3 as a rule). The first coat should be particularly light so that the lacquer will cling perfectly to the surface and dry very quickly.

⚠ Never load the substrate in one coat as there is a risk of dripping and overloading which will result in a yellowish appearance and visible stains!



4 Drying and finishing

- The lacquer dries relatively quickly, between 15 minutes and 2 hours, depending on the outside temperature.
- It is dust-free after 15 minutes and cured after 2-6 hours.

👍 The installation is complete !

