

## Essential accessories



**Squeegee**

Ref. produit : VO147



**Cutter**

Ref. produit : VO101



**Isopropyl alcohol**

Ref. produit : VO187



**PRIMADHER Extrême**

Ref. produit : VO213

## Suggested accessories



Hair  
dryer



ou

Heat  
gun

**i Note:** Luminis Films decorative adhesive coating can be applied to any non-porous surface. On glass applications, please consult us before installation to avoid the risk of thermal shock.

## 1 Preparation

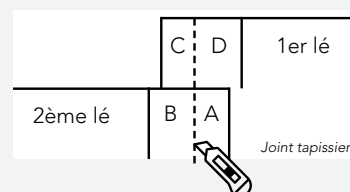
- The PRIMADHER Extrême (bonding layer) is necessary and advised for some materials.
- Clean greasy surfaces with alcohol if necessary and dirty or mouldy surfaces with soapy water.
- Smooth any rough surfaces with fine sandpaper and remove dust.
- If necessary, rinse and dry the surface.
- A raw wall or plaster to be treated in a new construction must be thoroughly dry (wait 3 weeks before treating with the adhesive coating).
- The application of the adhesive coating to a synthetic material can lead to outgassing.
- First carry out a compatibility test with a small format of 20 x 20 cm and wait 1 to 2 weeks for the adhesive to cure properly. If no bubbles (or If no bubbles (or tunnels) appear, the installation can be considered.
- The same applies to a painted surface (paint dry to the core +/- 15 hours) containing silicones.

## 2 Installation: flat surface

- Pre-cut each format to be laid with an extra 5 cm border.
  - Peel off 10 cm of the protective liner by folding it to the side and gently start the dry application from the top.
  - Make sure you line up the film (especially the lineal references...) from the start!
  - As you apply the film, press/roll it on with a squeegee/spatula (preferably from the bottom up, then from the top down, holding the squeegee at a 45° angle).
- Once the first 10 cm is in place, remove the protective liner 20-30 cm from the back and continue with the above taping procedure and so on to the bottom.
- When finished, re-moisten the treated panel more firmly (with a soft cloth on your squeegee) in the vertical direction and inspect/search for any air bubbles. Puncture these bubbles with a small point to remove the air and re-moisten the surface in question.

### A. Successful joints / fittings

- For large panels, take care to leave a 5 cm liner at the back of the two strips laid as follows, and cut (example of the dotted line) in the centre using a good cutter and a large ruler.
- Excess «A» falls off, then lift «B» to remove excess «C».
- Finally, gently remove the liner paper from the top of the «D» part, while lightly trowelling.
- Do the same with part «B» to finish.
- Accentuate the blending towards the centre of the joint by a slight rotation from top to bottom to downwards to ensure a perfect finish.



### 3 Installation: curved corners

Use the technique described below with heat. A hairdryer with a temperature of only 60-65°C will be sufficient to ensure that the adhesive lining is perfectly adapted to the desired curve! Ideally, we recommend using a heat gun, which is more effective. Sweep the heat over the area to be thermoformed without getting too close to the adhesive so as not to burn it.

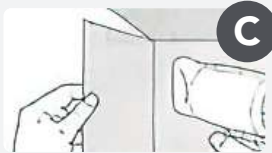
#### A. Application on outside corners



Apply the primer to a 4 cm strip from the corner. This will improve the adhesion of the film around the corner.

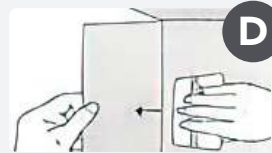


Apply the adhesive coating when a surface is flat, starting with the larger surface. Leave the liner strip under the small vertical strip. To cut the backing paper, use the cutter.



Stretch the film slightly by applying it around the corner (this prevents bubbles). Apply gently, heating all along the corner if the temperature is below 20 °C.

**!** Excessive heat will stretch and distort the film!



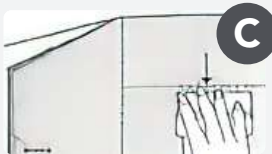
#### B. Application on inside corners



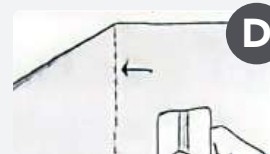
Apply the Primer Plus to a 4 cm strip from the corner. This will improve the adhesion of the film around the corner.



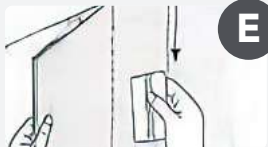
Measure and cut the protective paper in line with the corner. Use the cutter.



Apply the film over a wide area for flat surfaces. Keep the protector on the unapplied vertical strip.



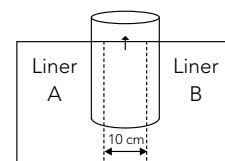
Mark the corner along the length of the panel with the squeegee. Remove the protective paper over a distance of 20 to 30 cm and apply the panel from the corner.



Re-apply with the squeegee on the edges of the film and on the corner. Cut the film in the corner.

### 4 Installation: pillar

Apply the film vertically for only about ten centimetres (see sketch opposite), to centre it well. Then remove the disposable liner from the edges (left «A» and right «B») from top to bottom, taking care to observe the «JOINTS» chapter above to obtain a good finish.



**👍 The installation is complete !**

